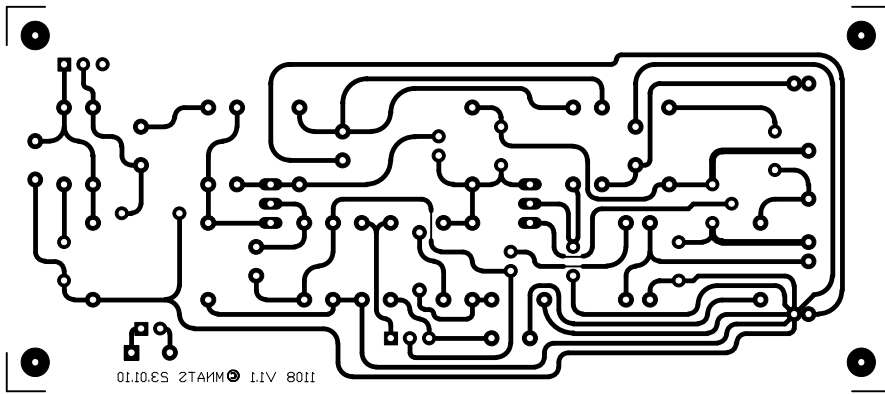


1108_1~2 Check Plot



BOM FOR 1108

<i>QUANTITY</i>	<i>VALUE</i>	<i>DESCRIPTION</i>	<i>DESIGNATION</i>
2	100uF	CAPACITOR, ELECTROLYTIC	C1,C10
2	.15uF	CAPACITOR, FILM	C2,C8
1	1uF	CAPACITOR, ELECTROLYTIC	C3
1	47pF	CAPACITOR, CERAMIC	C4
1	6.4uF	CAPACITOR, ELECTROLYTIC	C5
1	6.8uF	CAPACITOR, ELECTROLYTIC	C6
1	.0047uF	CAPACITOR, FILM	C7
1	.033uF	CAPACITOR, FILM	C9
1	20pF	CAPACITOR, CERAMIC	C11
1	1N914	DIODE	CR1
1	J309	TRANSISTOR, FET	Q1
1	2N3707	TRANSISTOR, BIPOLAR	Q2
1	2N3053	TRANSISTOR, BIPOLAR MED POWER	Q3
1	97.6k	RESISTOR	R1
1	82k	RESISTOR	R2
1	30k	RESISTOR	R3
1	22k	RESISTOR	R4
1	15M	RESISTOR	R5
1	3.3M	RESISTOR	R6
1	33k	RESISTOR	R7
1	12k	RESISTOR	R8
2	4.7k	RESISTOR	R9,R16
3	560	RESISTOR	R10,R11,R18
1	1.2M	RESISTOR	R12
1	180k	RESISTOR	R13
1	820k	RESISTOR	R14
2	8.2k	RESISTOR	R15,R17
1	150k	RESISTOR	R20
1	39R	RESISTOR	R32
1		CMMI-7C OR SIMILAR	T1
1		CM-96731 OR EA-5002	T2
1		LDR (OPTIONAL)	

